

SOLAR ASC Carrier

R|E|N|A|.



Fast drying - no shadows and marks

This carrier intended for processing of solar cells can be used in most wet processing systems. Better wafers by cleaner surfaces and reduced drying time ensure high production rates. Design of carrier guarantees maximum exchange of chemical solution.

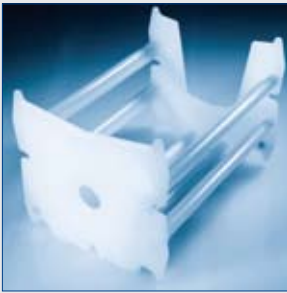
Areas of application

- Saw damage etching, texturing
- Oxide/glass etching
- For solar cells or similar products
- For alkaline and acidic solutions
- Superior cleaning and drying techniques

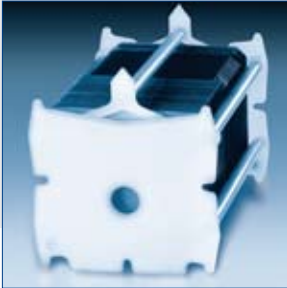
Features and benefits

- Superior surface quality of wafers
- Its open design ensures maximum flow of process solution between wafers.
- Small support bars and minimised contact points minimise influences on the flow and help to avoid shadowing and drying marks.
- Flat face plates with reference points support the suitability for automatic handling.
- Floating forces are reduced by reinforcements integrated in the support bars.
- Fully integrated floating prevention with RENA wet processing systems:
The integrated reinforcements make additional down holding bars redundant and reduce handling and automation efforts.
- Transponder for MES interface optional





Separation modules



Wafer transport inside WaSep



Carriers during processing

Technical Data ASC Carrier

Wafer Dimensions

- Size: 100 x 100 mm² to 210 x 210 mm² , for standard sizes see table below, other sizes on application
- Thickness: 150 µm to 400 µm, depending on size < 150 µm on application
- Slot pitch: 4.76 mm, other pitches on application

Carrier Capacity 25, 50, 100 at pitch 4.76 mm

Dimensions Carrier	Carrier Capacity	Wafer Size (mm)	Length (mm)	Width (mm)	Height (mm)
25		100 x 100	145	197	197
		125 x 125	145	197	197
		156 x 156	145	197	197
		210 x 210	145	246	237
50		100 x 100	274	197	197
		125 x 125	274	197	197
		156 x 156	274	197	197
		210 x 210	274	246	237
100		100 x 100	530	197	197
		125 x 125	530	197	197
		156 x 156	530	197	197
		210 x 210	530	246	237

Material

- Carrier: PVDF, PFA
- Reinforcement: stainless steel (SS), carbon fibre (CFR)
- optional coatings for SS: epoxy, Halar

Options

- Face plates can be adapted to suit customer's requirements (within limits)
- Implementation of transponders for product tracking