

SOLAR ASC Carrier

R|E|N|A|.



Fast drying - no shadows, no marks

This carrier intended for processing of solar cells can be used in most wet processing systems. Better wafers by cleaner surfaces and reduced drying time ensure high production rates. Design of carrier guarantees maximum exchange of chemical solution.

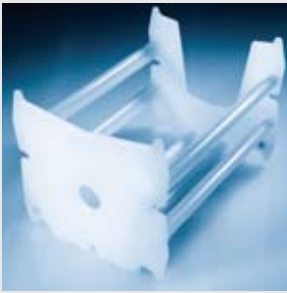
Areas of application

- Saw damage etching, texturing
- Oxide/glass etching
- For solar cells or similar products
- For alkaline and acidic solutions
- Superior cleaning and drying techniques

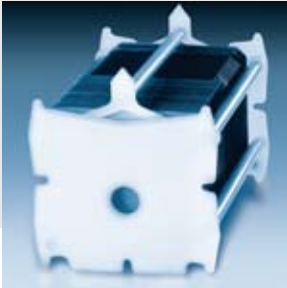
Features and benefits

- Superior surface quality of wafers
- Its open design ensures maximum flow of process solution between wafers.
- Small support bars and minimised contact points minimise influences on the flow and help to avoid shadowing and drying marks.
- Flat face plates with reference points support the suitability for automatic handling.
- Floating forces are reduced by reinforcements integrated in the support bars.
- Fully integrated floating prevention with RENA wet processing systems:
The integrated reinforcements make additional down holding bars redundant and reduce handling and automation efforts.
- Transponder for MES interface optional





ASC 50_156 PVDF



Carrier with downholder



Carriers during processing

Technical Data ASC Carrier

- Wafer Dimensions**
- Size: 100 x 100 mm² to 156 x 156 mm², for standard sizes see table below
 - other sizes on application
 - Thickness: 150 μm to 300 μm, ≤ 150 μm on application
 - Slot pitch: 4.76 mm, other pitches on application

Carrier Capacity 25, 50, 100 at pitch 4.76 mm

Dimensions Carrier

Carrier Capacity	Wafer Size (mm)	Length (mm)	Width (mm)	Height (mm)
25	100 x 100	145	197	186,5
	125 x 125	145	197	186,5
	156 x 156	145	197	186,5
50	100 x 100	274	197	186,5
	125 x 125	274	197	186,5
	156 x 156	274	197	186,5
100	100 x 100	554	197	186,5
	125 x 125	554	197	186,5
	156 x 156	554	206	197

Other sizes available only on request

- Material**
- Carrier: PVDF, PFA
 - Reinforcement: stainless steel (SS), carbon fibre (CFR)
 - optional coatings for SS: epoxy, Halar

- Options**
- Downholder for laboratory applications
 - Fully square, pseudo square ; other applications
 - Carrier for passive and active gripping available